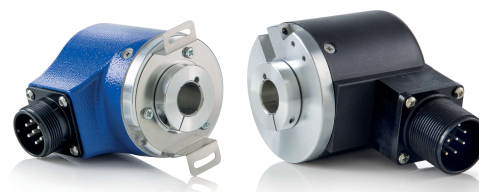


MAIN FEATURES

Hollow shaft encoder series for industrial applications with high mechanical resistance requirements. The proprietary state of the art magnetic sensor provides wide options (resolution, electrical output, index width) programmable by the end user.

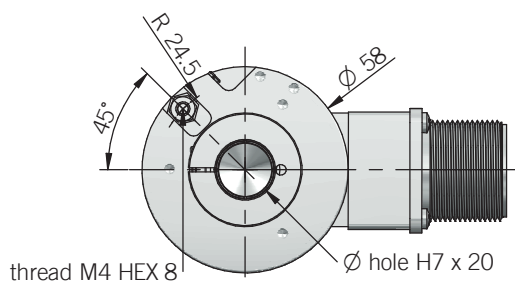
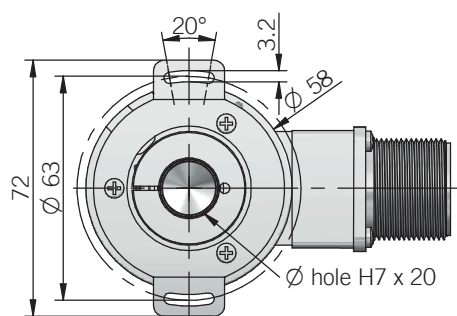
- 3 channel encoder (A / B / Z) up to 20000 ppr
- Power supply up to +30 V DC with RS-422 or HTL as electrical interface
- Up to 800 kHz output frequency
- Cable or connector output, available with metal cover for heavy duty applications
- Blind hollow shaft diameter up to 15 mm
- Mounting by stator coupling or with torque pin



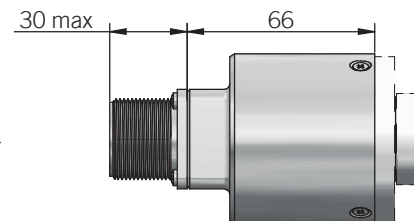
ORDERING CODE	EMI	P	58F	M* 20000	Z	5/30	L	15	X	X	M	R	.162	+XXX
SERIES magnetic incremental encoder EMI														
FEATURE user programmable P														
MODEL blind hollow shaft with stator coupling 58F blind hollow shaft with torque pin 63G														
METAL COVER * add for metal cover M														
RESOLUTION ppr 20000 user programmable from 1 to 20000 ppr														
ZERO PULSE with zero pulse Z														
POWER SUPPLY 5 ... 30 V DC 5/30														
ELECTRICAL INTERFACE line driver L RS-422 / HTL user programmable														
BORE DIAMETER mm 15 other diameters with optional shaft adapter, see Accessories														
ENCLOSURE RATING IP 54 X IP 66 S														
OPTION to be reported X														
OUTPUT TYPE cable (standard length 1,5 m) P preferred cable lengths 2 / 3 / 5 / 10 m, to be added after DIRECTION TYPE (eg. PR5) MIL plug connector M M12 plug connector M12 M23 plug connector H														
DIRECTION TYPE axial A radial R														
SOCKET socket not included .162 to be reported only with connector output (eg. MR.162), for socket see Accessories														
VARIANT custom version XXX														

58 F

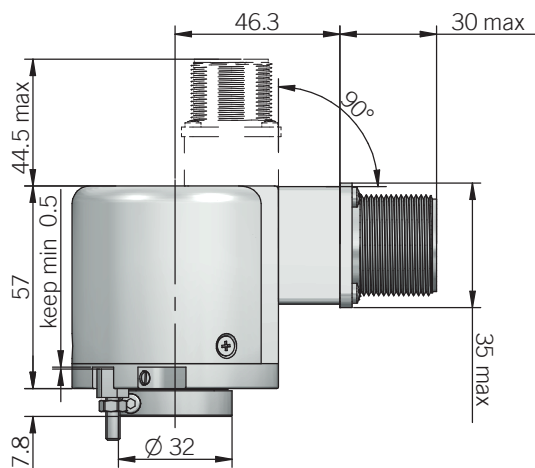
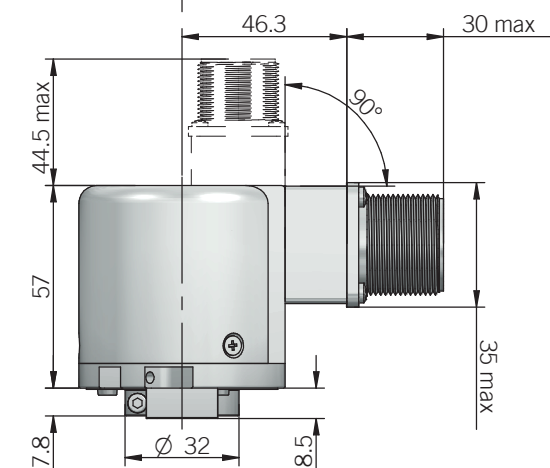
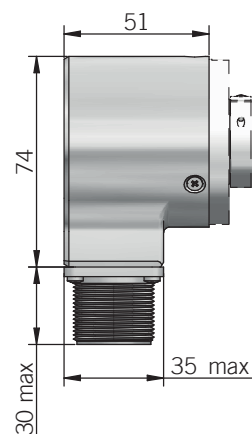
63 G



DIMENSIONS WITH METAL COVER AND AXIAL OUTPUT



DIMENSIONS WITH METAL COVER AND RADIAL OUTPUT



recommended mating shaft tolerance g6
dimensions in mm

torque pin is included in model G

ELECTRICAL SPECIFICATIONS

Resolution	user programmable from 1 to 20000 ppr default 1024 ppr
Power supply¹	4,5 ... 30 V DC (reverse polarity protection)
Power draw without load	0,8 W max
Max load current	20 mA / channel
Electrical interface²	line driver RS-422 / HTL (AEIC-7272 or similar) user programmable / default RS-422
Max output frequency	800 kHz
Counting direction	user programmable default A leads B clockwise (shaft view)
Index length	user programmable default 180°e (gated A)
Accuracy	± 0,10°
Hysteresis	user programmable from 0° to 0,70° default 0,17°
Start-up time	500 ms
Mean time to dangerous failure (MTTF)_d³ according to EN ISO 13849-1	173 years
Mission time (Tm)³	20 years
Diagnostic coverage (DC)³	0%
Cable type	shielded - fixed installation conductors section 0,22 mm ² / AWG 24 bending radius min 60 mm
Electromagnetic compatibility	according to 2014/30/EU directive
RoHS	according to 2011/65/EU directive
UL / CSA	file n. E212495

MECHANICAL SPECIFICATIONS

Bore diameter	ø 15 mm ø 6* / 8* / 9,52 (3/8")* / 10* / 11* / 12* * with optional shaft adapter, please refer to Accessories
Enclosure rating IEC 60529	X = IP 54 S = IP 66
Max rotation speed	6000 rpm
Shock	50 G, 11 ms (IEC 60068-2-27)
Vibration	10 G, 10 ... 2000 Hz (IEC 60068-2-6)
Moment of inertia	4 x 10 ⁻⁶ kgm ² (95 x 10 ⁻⁶ lbft ²)
Starting torque (at +20°C / +68°F)	< 0,02 Nm (2,83 Ozin)
Bearing stage material	aluminum
Shaft material	stainless steel
Housing material	PA66 glass fiber reinforced / painted aluminum
Bearings	n.2 ball bearings
Bearings life	10 ⁹ revolutions
Operating temperature^{3,4}	-25° ... +100°C (-13° ... +212°F) -25° ... +85°C (-13° ... +185°F) with M12 connector
Storage temperature⁴	-25° ... +70°C (-13° ... +158°F)
Weight	350 g (12,35 oz) 450 g (15,87 oz) with metal cover

¹ as measured at the transducer without cable influences


² for further details refer to OUTPUT LEVELS on TECHNICAL BASICS section

³ this product is not a safety component, for further details refer to TECHNICAL BASICS section

⁴ measured on the transducer flange

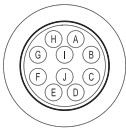
⁵ condensation not allowed

CONNECTIONS

Function	Cable	10 pin M	8 pin M12	12 pin H
+V DC	red	D - E	7	12
0 V	black	F	1	10
A+	green	A	6	5
A-	brown or grey	G	5	6
B+	yellow	B	4	8
B-	orange	H	3	1
Z+	blue	C	2	3
Z-	white	I	8	4
	shield	J	housing ¹	9

¹ only with metal cover

M connector (10 pin)
Amphenol MS3102-E-18-1
front view



M12 connector (8 pin)
M12 A coded
front view



H connector (12 pin) - M23 CCW
Hummel 7.410.000000 - 7.002.912.603
front view

